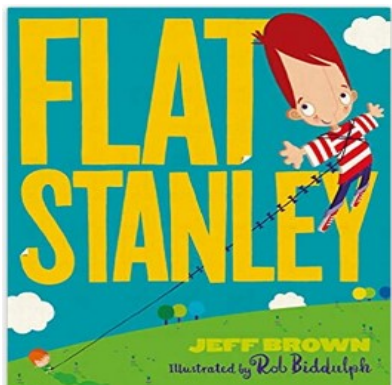




Flat Stanley Explores Our School

The Big Idea- What is our school like?

Flat Stanley loves adventures, and his next big adventure is to our school! We will learn about where we live in the local area and use maps to explore our school. As we become experts, we will use the book, 'Here We Are' to look at



Year One Autumn Term One 2023

As **Readers**, our core texts will be Flat Stanley and Here We Are. We will use story language to retell the story and build vocabulary, and explore features of non-fiction texts.

As **Writers**, we will learn to use capital letters and full stops to write simple sentences. We will apply phonic skills to spell new words.

As **Mathematicians**, we will build our understanding of number and place value within 10. We will learn to name and describe 2D and 3D shapes.

As **Geographers**, we will be learning simple mapwork skills. We will explore the area around our school.

As **Scientists**, we will learn about the human body.

As **Artists**, we will learn to colour mix. As **Designers**, we will learn to join materials to make our own peg dolls.

In **PSHE**, we will learn about our feelings and relationships.

In **Music**, we will learn to keep a beat and tap a rhythm.

Growing together

Opportunities for all

Learning for life

Daring to dream

Entry and Exit point

SMSC

Thinking skills and personal capabilities

Entry: Summer Holiday project- 'Flat Me' travels the UK.

Exit: Map reading treasure hunt!

Throughout our topic we will have the opportunity to explore and develop moral concepts and values on moral dilemmas. Using philosophical questions We will have a sense of empathy and appreciation with others' lives in different geographical settings; having time to reflect on their experiences and compare to our own. We will make responsible and reasoned judgments and sharing our views and opinions.

We will continue to develop our key skills of:

- resilience
- reflectiveness
- collaboration
- creative thinking
- independence

Year 1 Autumn 1



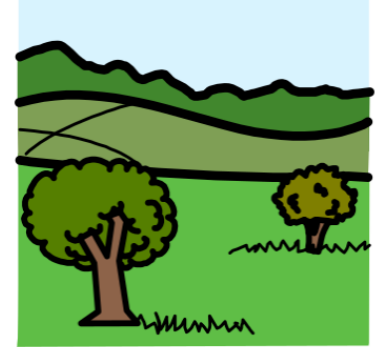
map



address



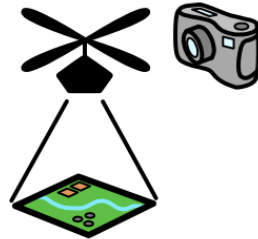
town



countryside



route



aerial
photograph



weather



season