



Our Living Planet



Year One
Summer Term 2, 2026

Big picture: What is it like to live in Nairobi?

As our topic unfolds we will explore similarities and differences between the UK and Kenya. We will be inquisitive scientists as we explore animals and we will use non-fiction texts to research.

Roar, Squeak, Snort, Croak! What are those strange sounds coming from Year 1? It is 'Wear It Wild' day! To celebrate our learning, we will dress up as our favourite wild animals and share our knowledge. The day will be filled with exciting activities and time in Forest School.



As **Readers**, we will immerse ourselves in non-fiction texts to find information about animals. We will explore riddles in Poetry using Flip Flap Safari.

As **Writers**, we will learn to write non-fiction animal reports using questions and statements. We will write riddles about our invented animals.

As **Mathematicians**, we will learn: Place value to 100; Money; Telling the time.

As **Geographers**, we will be comparing the UK and Kenya. We will learn to use maps and identify physical and human features.

As **Scientists**, we will be exploring animal groups (mammal, amphibian, reptile, bird, fish) and animal diets (carnivore, herbivore, omnivore).

As **Artists**, we will learn about printing based on Tinga Tinga Art.

As **Designers**, we will design and build model windmills.

As **Musicians**, we will learn about pitch, improvisation and composition. We will learn to perform.

In **PSHE**, we will thinking about rights and responsibilities. Towards the end of term we will prepare for transition to Year 2.

In **Computing**, we will introduce on-screen programming through ScratchJr.

In **RE**, we will explore the question: Why do people tell stories? We will explore how stories are important to people of different faiths and beliefs .

In **PE**, we will learn target skills and striking/fielding games.

Growing together		Opportunities for all		Learning for life		Daring to dream	
Entry and Exit point		SMSC		Thinking skills and personal capabilities			
<p>Entry: Exploring our school</p> <p>Visit: Zoolab Workshop Monday 22nd June</p> <p>Exit: Wear it Wild Day Wednesday 15th July 2026</p>		<p>Throughout our topic we will have the opportunity to explore and develop moral concepts and values. Using philosophical questions we will have a sense of empathy and appreciation with others' lives in different geographical settings; having time to reflect on their experiences and compare to our own.</p>		<p>We will continue to develop our key skills of:</p> <ul style="list-style-type: none"> resilience reflectiveness collaboration creative thinking independence 			

Our Living Planet



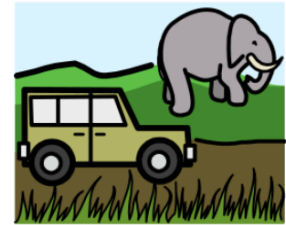
Kenya



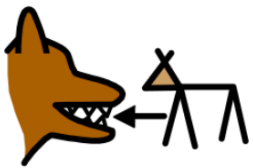
Africa



map



safari



carnivore



herbivore



omnivore



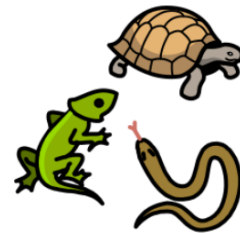
fish



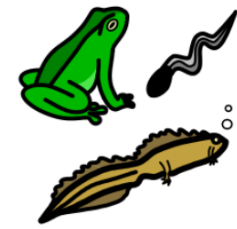
mammal



bird



reptile



amphibian